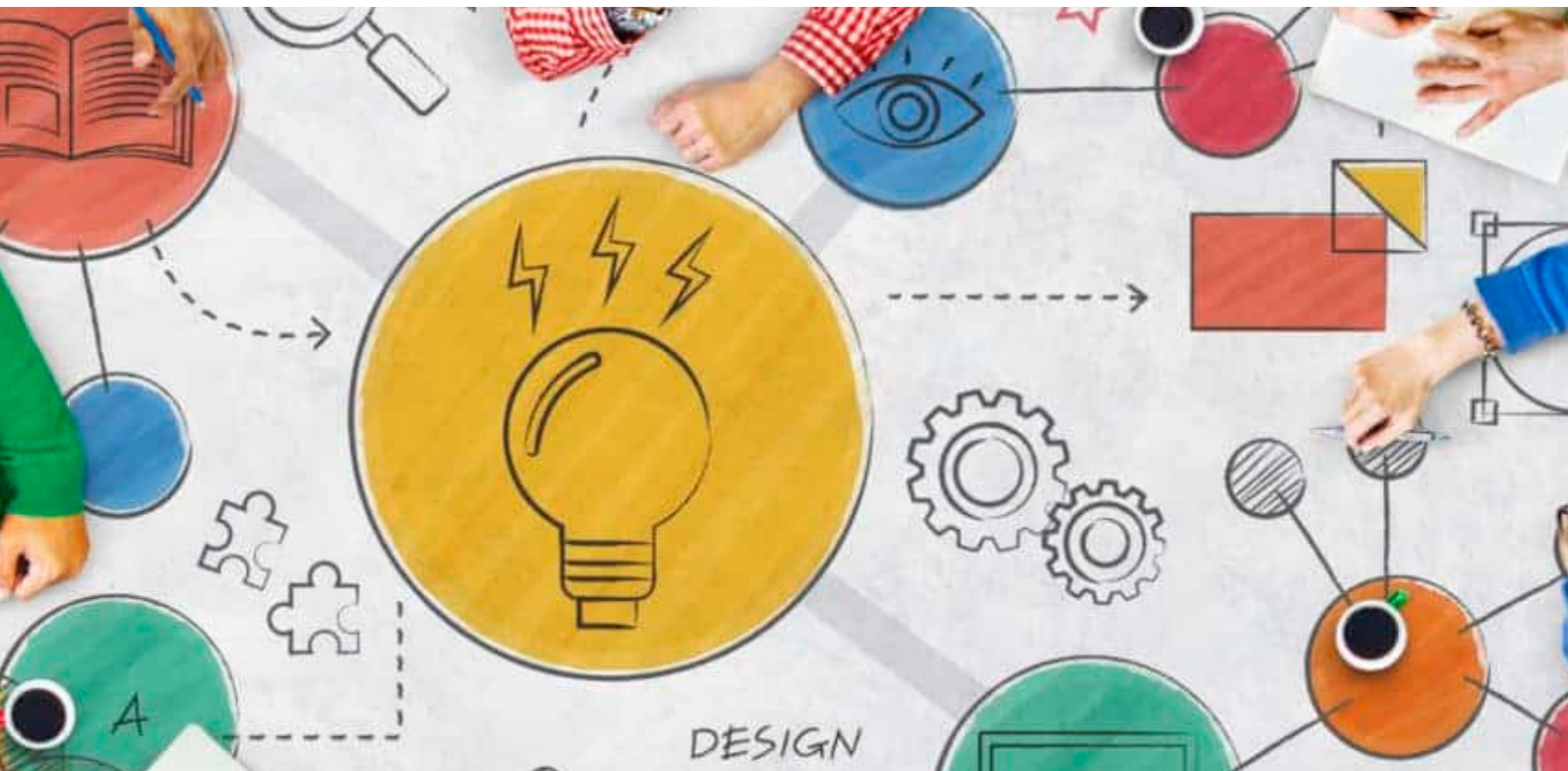


Curriculum Development



Standards:

This course aligns to all of the INTASC Standards including Learner Development, Learning Differences, Learning Environments, Content Knowledge, Application of Content, Assessment, Planning for Instruction and Instructional Strategies.

It also aligns to all of the McRel Teacher Evaluation Standards including Teacher Leadership, Teachers Know Content and Teachers Facilitate Learning.

Effective curriculum is a foundation for successful learning. Educators can strengthen the curriculum with the resources, examples, and templates included in this online course.

Teachers learn how to plan, develop, integrate, and evaluate curriculum more effectively. This information empowers teachers to feel more confident when implementing interactivities.



Certificate of
Completion



100% Online



Quiz

Curriculum Development

Course Outline

LESSON 1: Introduction

- Curriculum development
- Curriculum vs. Syllabus
- Effective curriculum
- Curriculum planning

LESSON 2: Developing a Standard-based Curriculum

- Standard-based curriculum
- Yearlong curriculum
- Elements of a long-term scope and sequence of curriculum
- Types of curriculum maps
- Backwards planning
- Creating a unit plan
- Preparing an effective lesson plan

LESSON 3: Curriculum Integration

- Curriculum and levels of Integration
- Approaches of integration
- Interdisciplinary curriculum
- Benchmark descriptors of interdisciplinary curriculum
- Models of curriculum integration
- Implications of implementing an integrated curriculum

LESSON 4: Curriculum Evaluation

- Defining curriculum evaluation
- Need for evaluation
- Types and models of curriculum evaluation
- Criteria for evaluation
- Phases of curriculum evaluation
- Tools for evaluation



5 Hours
of Learning



Convenient Access:
Start Right Away



Resources & Tools for
Professional Learning Plans



Renew a Teaching License

by Professional Learning Board®

RenewTeachingLicense.com

© Professional Learning Board®, a service of The Learning Factory LLC